



Queen's
UNIVERSITY

PSYCHIATRY

60 YEARS DEPARTMENT OF
Psychiatry
1957-2017

The Department of Psychiatry at Queen's University offers an excellent psychiatry residency program. We are dedicated to educating tomorrow's leading psychiatrists through a combination of academic excellence and practical clinical experiences within models of inter-professional, collaborative care.



Overview

Our Department consists of six Divisions, each of which provide excellence in clinical service delivery and academic mission. Departmental Divisions include Adult, Child and Youth, Developmental Disabilities, Forensic, Geriatric, and Community Psychiatry.

The Department excels in providing close working and supportive relationships between residents and faculty members across all Divisions.

Residency Program

The five-year residency program offers an ideal combination of clinical rotations, academic teaching, electives, and research opportunities.

PGY1	PGY2	PGY3	PGY4	PGY5
Psychiatry (first four blocks) Internal Medicine Neurology Emergency Medicine Family Medicine Pediatrics Geriatric Medicine Research Medicine One Elective	Inpatient and Outpatient General Adult Psychiatry	Child and Youth Psychiatry Developmental Disabilities Geriatric Psychiatry	Complex Collaborative Psychiatry including Consultation and Liaison Service, Shared Care, Addictions, and Rehabilitation of Persistent Mental Illness	Remaining RCPSC training requirements Exam Preparation Electives: mood disorders, anxiety disorders, marital therapy, eating disorders, psychopharmacology, rehabilitation of the chronic mentally ill
	Psychotherapy: Cognitive Behavioural Therapy (CBT), Interpersonal Therapy (IPT), Psychodynamic Therapy, Family, Group, and Couple Therapy, Dialectical Behavioural Therapy (DBT)			
	Research Training: All residents are involved in ongoing research projects and are mentored from initiation to completion.			

Rotations may change with the implementation of a competency-based medical education curriculum.

Psychotherapy

The Department of Psychiatry at Queen's is able to offer *all modes* of therapy to meet newly adopted RCPSC requirements in psychotherapy. There are fully certified supervisors to provide individual supervision in each school of therapy. Residents commence their psychotherapy training after the first year in a longitudinal manner, from the second to fifth years. Two annual CBT workshops are provided to residents to supplement the core teaching and individual supervision in this mode of therapy.

Collaborative Care / Shared Care

At Queen's, we are proud of the close collaboration between psychiatrists and family physicians. Residents have numerous opportunities to practice shared care, now an RCPSC requirement, at urban and rural Family Health Teams and clinics throughout the region we serve.







Research

There is a strong focus on research activities in our Department. PGY1 residents attend a full-day research skills workshop that introduces them to such topics as design, critical appraisal, and effective presentation skills. The development of a research question and its progression through to a presentation or publication is a requirement for all residents during the course of their program. Residents may pursue research through their elective time.

Queen's University offers a Clinician Investigator Program for residents who decide to pursue a graduate degree.

Highly regarded research programs at Queen's include autism, geriatric, mood disorders, sleep disorders, and schizophrenia research. A majority of these research programs are closely rooted in the clinical work of our faculty.

Educational Activities

Residents have weekly academic half-day teaching sessions that include interviewing skills, core seminars, and psychotherapy teaching. Comprehensive academic days are complemented by a variety of other educational activities including Grand Rounds, Emergency Rounds, Journal Clubs, and Departmental Research Day.

Conferences and Courses

All residents will attend both of the Queen's Conferences on Academic Residency Education, one for PGY1s and the other for senior residents. Each resident is provided with funding on an annual basis for education leave to attend conferences and courses. Residents are also encouraged to attend local events such as the Mood and Anxiety Disorders annual conference.

Our Strengths

Queen's Psychiatry is nationally respected as a model of high quality inter-professional, collaborative mental health care, service, teaching and research. We are known for our leadership role in postgraduate medical education and our many strengths provide an exceptional learning experience for our residents.



A POSTGRADUATE FOCUS

The Department's clinical services and resources are designed to support the residency program. Opportunities for close, personal interaction enable residents to benefit from clinical experiences that are both extensive and relevant.

PEOPLE

Our teaching faculty and residents have been recognized as the core strength of our program, having made significant contributions to the practice of psychiatry provincially, nationally and internationally.

LEADERSHIP

Residents are provided with a variety of leadership opportunities. Examples include the two Chief Resident positions filled each year, the junior and senior residents selected to attend the annual Coordinators of Psychiatry Education (COPE) conference, and the Quality Improvement and Program Development committees.

COLLABORATIVE CARE

Queen's Psychiatry is a multi-disciplinary department and faculty consists not only of psychiatrists, but psychologists, social workers, nurses, occupational therapists and others dedicated professionals.

ACUTE CARE FACILITY

In 2011, a new 34,000 square foot mental health unit opened at Kingston General Hospital, consolidating all acute inpatient mental health care at KGH. This 45 bed unit features private rooms, an intensive observation area, and a child and adolescent unit. Patient care is delivered in a therapeutic environment of generous natural light and views of Lake Ontario, and residents directly benefit from spacious workstations and call facilities.

SUBSPECIALTY PROGRAMS

The Department of Psychiatry has approved subspecialty training programs in Geriatric and Child and Youth Psychiatry. Residents at Queen's are able to enhance their Psychiatry training with specializations in the above areas.

Kingston Health Sciences Centre

Kingston General Hospital Site

Hotel Dieu Hospital Site

Providence Care Hospital

Adult (Acute)

Inpatients 39 beds

**Consultation–Liaison
Psychiatry Team**

**Emergency Psychiatry
Services**

Rapid Access to Psychiatric
Assessment Service

**Intensive-Transitional
Treatment Program**

Outpatients

Anxiety Clinic

ADHD Clinic

Concurrent Disorders

Intensive Transitional
Treatment Program

General Psychiatry Clinic

Geriatric Psychiatry Clinic

Mental Health and Law

Reproductive Psychiatry Clinic

**Community Outreach/
Shared Care
(Family Health Teams)**

Early Intervention Psychosis

Eating Disorder Clinic

Child and Youth Psychiatry

Eating Disorders (limited)

**Consultation Liaison
(Pediatrics)**

Outreach

Mood and Anxiety

Urgent Care

General

Urgent Care Clinic

Family Court Clinic

Neurodevelopmental Clinic

Adult (Rehab)

Schizophrenia/Rehabilitation

3 Inpatient Units

Psychosocial Rehab Assertive
Community Treatment Team

Community Integration
Program – Assertive
Community Treatment Team

Intensive Case Management

VOCEC

Community High Intensity
Treatment Team

**Mood Disorders Research
and Treatment Service**

Ward 16 – 20 beds

Outpatients

Outreach

ECT/TMS Service

Group Therapies

Personality Disorder Service

Chrysalis Program

Outpatients

Managing Powerful Emotions

**Dual Diagnosis Community
Outreach Team**

Community Treatment Order

Geriatric Psychiatry

Inpatients – 30 beds

Regional Outpatients

Outreach

Kingston Urban

Kingston Rural

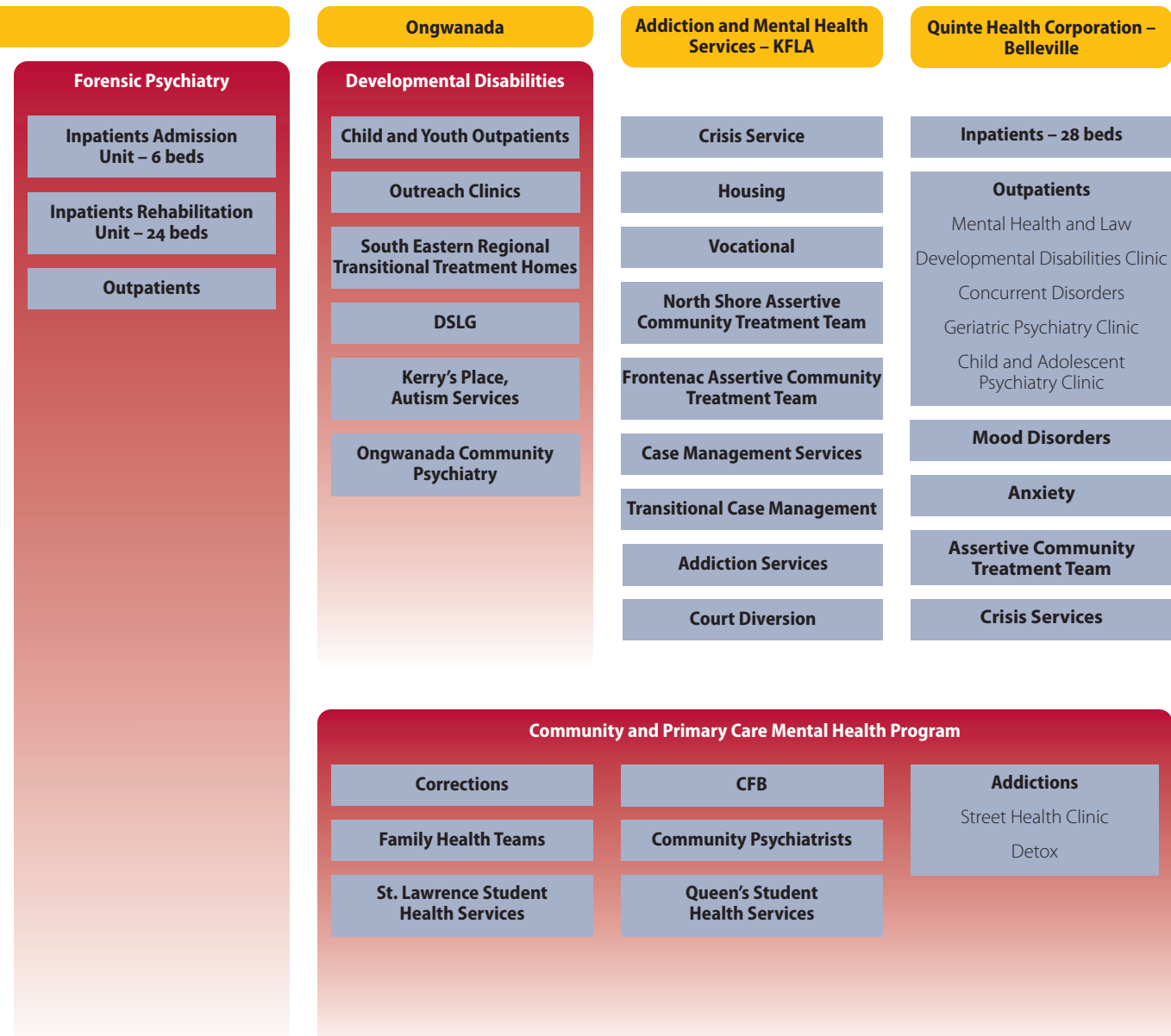
Belleville

Brockville

Consultation/Liaison

Shared Acute MH Care HDH

DEPARTMENT OF PSYCHIATRY





Medicine

DEPARTMENT OF PSYCHIATRY

Hotel Dieu Hospital

166 Brock Street

Kingston, Ontario K7L 5G2

613-544-3400 ext 2507

psychiatry.queensu.ca