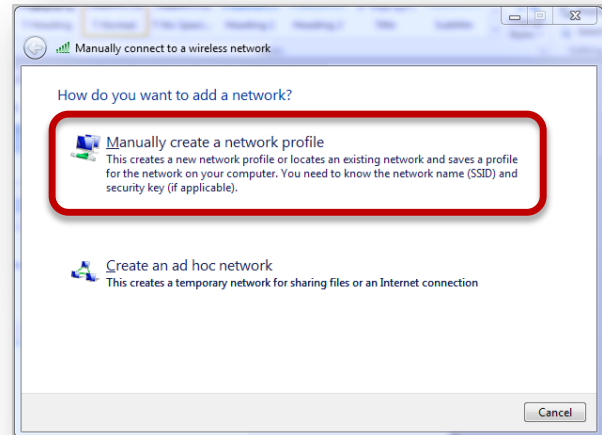
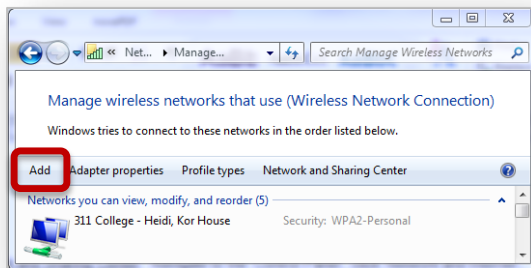
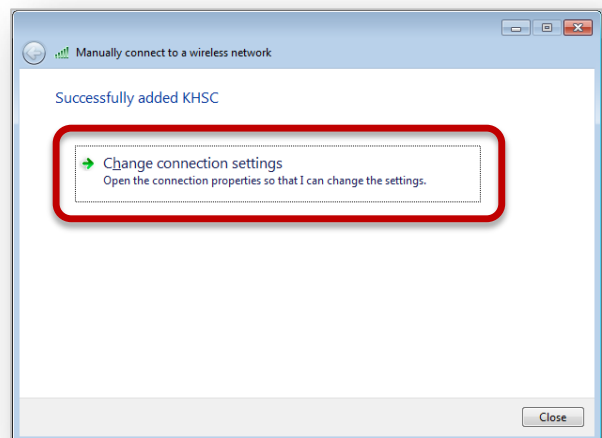
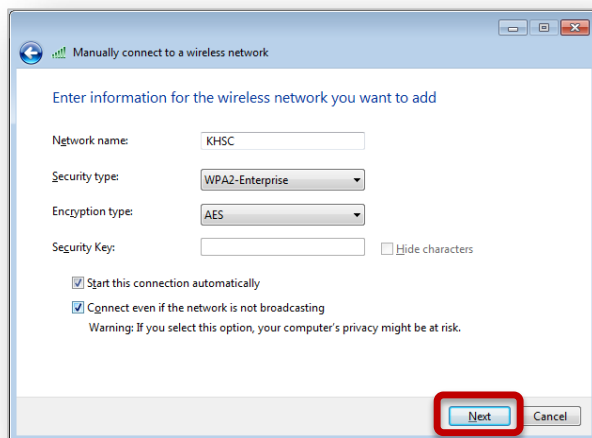


## Connecting to KHSC Corporate Wi-Fi Microsoft Windows Instructions Oct 2018 v1.1

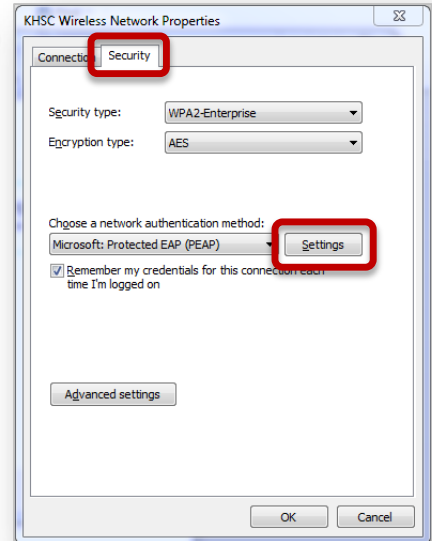
1. Open Network and Sharing Center: Navigate to the 'Control Panel', click 'Network and Internet', click 'Network and Sharing Center', then click 'Manage wireless networks' on the left-hand pane
2. Click 'Add' on the top left-hand pane, then click 'Manually create a network profile'



3. Enter the below details, click 'Next', then click 'Change connection settings':  
**Network name:** KHSC  
**Security type:** WPA2-Enterprise  
Checkmark 'Connect even if network is not broadcasting'

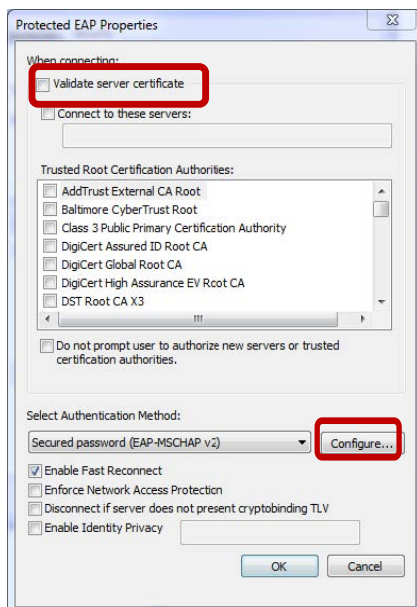


4. In the pop-up, click the 'Security' tab, click the 'Settings' button →

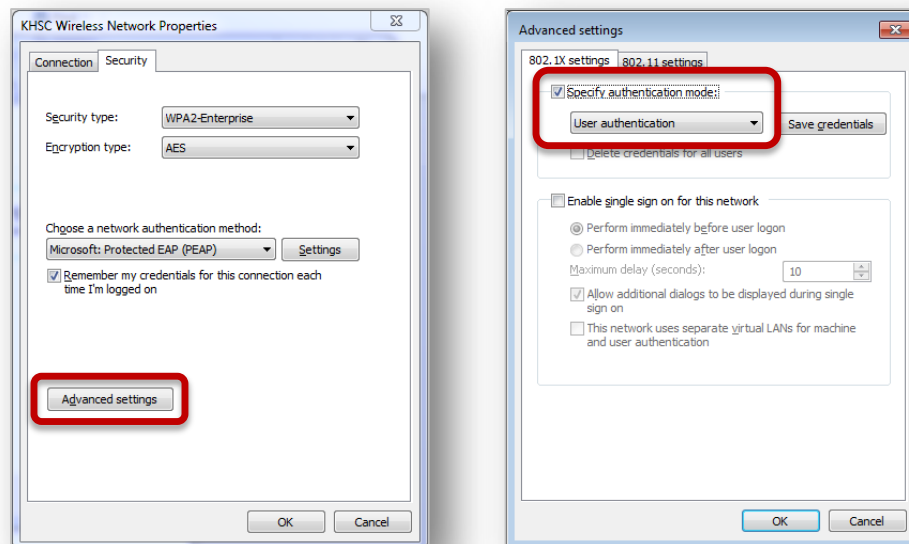


5. In the new pop-up, un-checkmark 'Validate server certificate', then click 'Configure' and un-checkmark 'Automatically use my Windows logon name and password (and domain if any)'; click 'OK' then click 'OK' again to close the pop-ups shown below

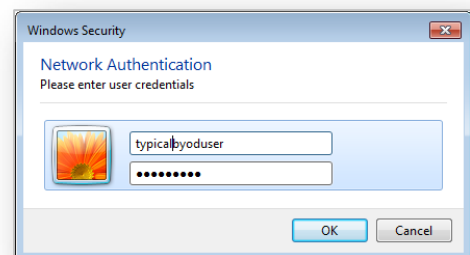
*Note: This will allow you to be prompted for your KHSC credentials*



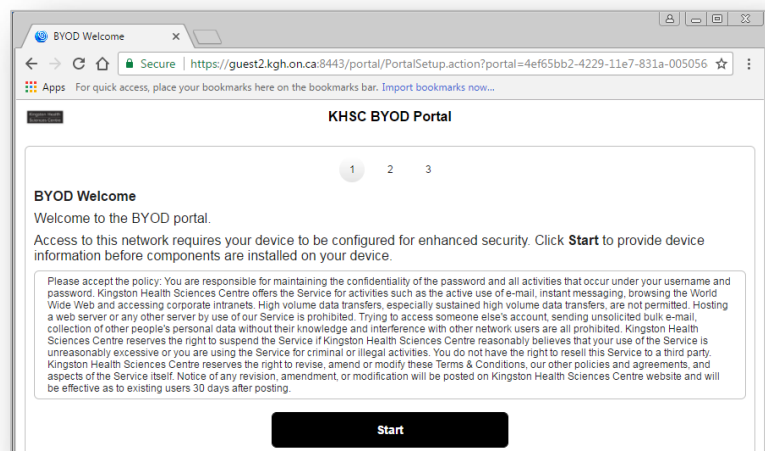
- Click 'Advanced settings'; in the pop-up, checkmark 'Specify authentication mode' and select 'User authentication' in the dropdown



- Click 'OK' or 'Close' until all pop-ups are closed
- Connect to the "KHSC" Wi-Fi option through your internet settings and enter your KHSC credentials as "HC\USERNAME"

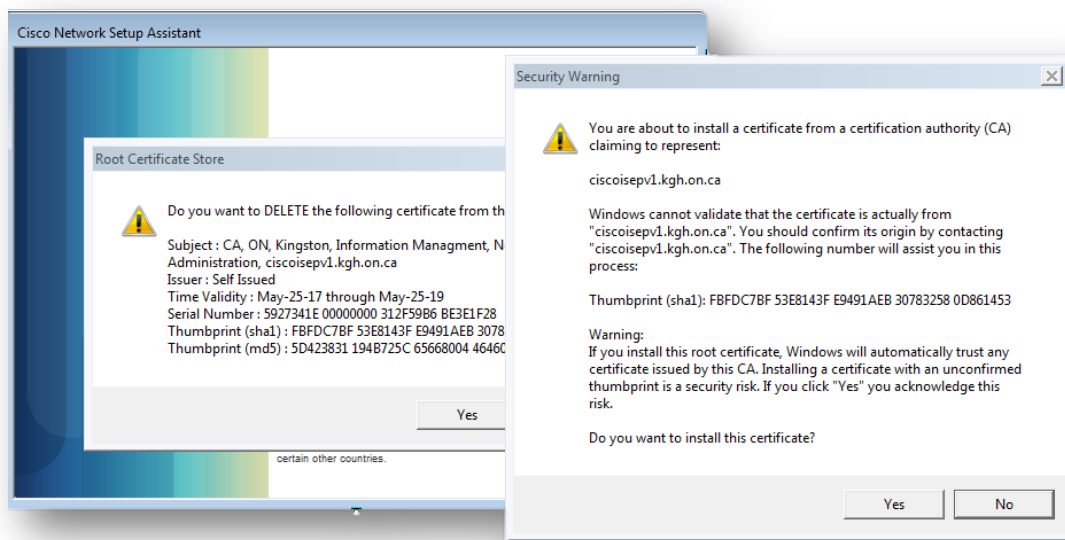


- Once connected, open Internet Explorer and enter a website in the address bar (e.g. [www.kgh.on.ca](http://www.kgh.on.ca)), you will be redirected to the "KHSC BYOD Portal"



- Read the Acceptable Use Policy, then click 'Start'
- Enter a 'Device name' and optionally a 'Description', then click 'Continue'

12. Open the downloaded file "NetworkSetupAssistant.exe" and click 'Run'
13. Click 'Start', follow the instructions and click 'Yes' to accept/install each certificate; you will be prompted to enter your HDH/KGH credentials for additional information



14. On the last setup screen, click 'Exit' and your device is ready to use the internet