

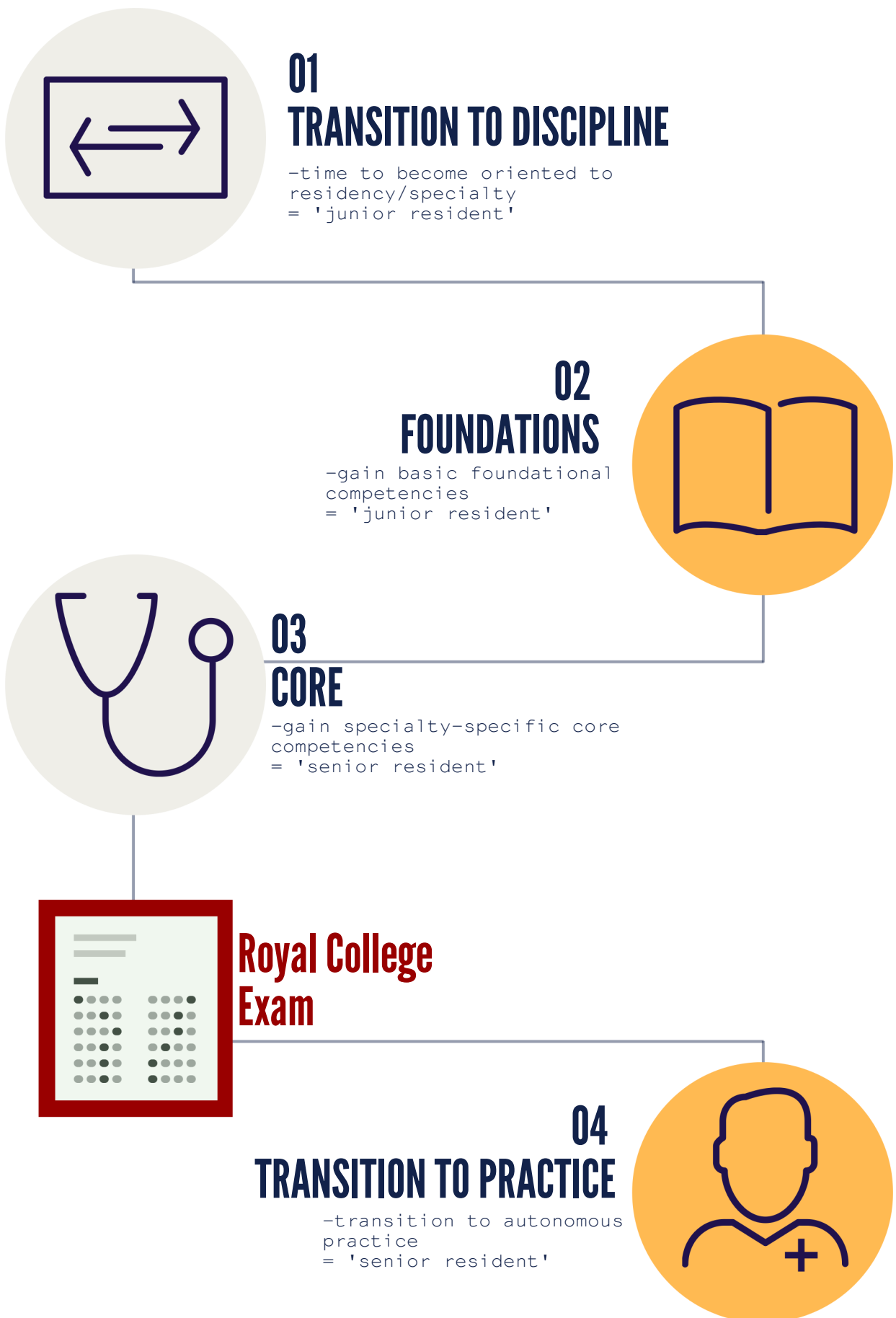
What is CBME ?

Competency-Based
Medical Education

"Residents will work within a defined time frame, but will be able to achieve competencies (measured by milestones/EPAs) on their own flexible learning schedule"

-Royal College of Physicians
& Surgeons of Canada

CBME Outline



For more information, see:
<http://meds.queensu.ca/education/postgraduate/cbme>