

**Huw T O Davies**  
PhD HonMFPHM  
Lecturer in Health  
Care Management,  
University of  
St Andrews

and

**Iain K Crombie**  
PhD HonMFPHM  
Reader in  
Epidemiology,  
University of  
Dundee

# What is meta-analysis?

Sponsored by an educational grant from Aventis Pharma

- **Meta-analysis is a statistical technique** for combining the findings from independent studies.
- Meta-analysis is most often used to assess the **clinical effectiveness of healthcare interventions**; it does this by combining data from two or more randomised control trials.
- Meta-analysis of trials provides a **precise estimate of treatment effect**, giving due weight to the size of the different studies included.
- The validity of the meta-analysis depends on the **quality of the systematic review** on which it is based.
- Good meta-analyses aim for **complete coverage of all relevant studies**, look for the **presence of heterogeneity**, and explore the robustness of the main findings using **sensitivity analysis**.

## What are meta-analyses?

### Trials, systematic reviews and meta-analyses

In some therapeutic areas (especially drugs and the treatment of cancer and heart disease) there exist numerous trials attempting to answer similar questions about clinical effectiveness, eg: **Does this treatment confer significant benefits when used for this group of patients?** The difficulty for clinicians and managers lies in making sense of a range of disparate literature spread over many journals, generated over many years and frequently carried out in diverse settings. The task is made no easier when, as often happens, many individual trials show great uncertainty (because of small size) or even conflict in their estimation of net effect (some studies showing harm while others show benefit).

**Systematic reviews** provide a rational synthesis of the research base and offer clear advantages to healthcare decision-makers.<sup>1</sup> They attempt to overcome the deficiencies of narrative reviews and polemics by applying the same rigorous standards to secondary research (where the unit of study is other research studies) as should be applied to primary research (original empirical study). Good systematic reviews take great care to find all the relevant studies (published and unpublished), assess each study for the quality of its design and execution, and combine the findings from individual studies in an unbiased manner. In this way they aim to present a balanced and impartial summary of the existing research evidence. Frequently, such systematic reviews provide a quantitative estimate of net benefit aggregated over all the included studies. **Such an approach is termed a meta-analysis.**

### Benefits of meta-analyses

Meta-analysis offers a rational and helpful way of dealing with a number of practical difficulties that beset anyone trying to make sense of effectiveness research.

#### 1. A clearer picture

Individual clinical trials may mean little, especially when they are small or medium-sized. Small studies tend to be inconclusive – they may show no statistical difference between the treated and control groups, but on the other hand they may be unable to exclude the possibility of there being a sizeable effect (that is, they have low power). Aggregating studies in a systematic and unbiased way may allow a clearer picture to emerge. The question we are asking is whether, on average, a particular treatment confers significant benefits when used for specific patient groups. Meta-analysis allows this aggregate picture to emerge.

#### 2. Overcoming bias

The danger of unsystematic (or narrative) reviews is that there is plenty of scope for bias. Certain (perhaps favourable) reports may be preferred over those that show no benefit. Informal synthesis may be tainted by the prior beliefs of the reviewer. Meta-analysis carried out on a rigorous systematic review can overcome these dangers – offering an unbiased synthesis of the empirical data.

#### 3. Precision

The precision with which the size of any effect can be estimated depends on (among other things) the number of patients studied. Meta-analyses that draw on patients studied in many trials thus have more power to detect small but clinically significant effects, and can give more precise estimates of the size of any effects uncovered. This may be especially important when an investigator is looking for beneficial (or deleterious) effects in specific subgroups. Individual studies may contain too few patients in the subgroup of interest to show anything, but a clearer picture may be presented by the systematic aggregation of data from many individual studies (there are, however, some problems with this approach which are discussed later, see page 4).

## 4. Transparency

It is not simply the case that meta-analyses can always exclude bias better than other forms of review. Their advantage also lies in the openness with which good meta-analyses reveal all the decisions that have been taken throughout the process of achieving the final aggregate effect sizes. Thus, good meta-analyses should allow readers to determine for themselves the reasonableness of the decisions taken and their likely impact on the final estimate of effect size.

### Requirements for meta-analysis

**The main requirement for a worthwhile meta-analysis is first and foremost a well-executed systematic review.**<sup>1</sup> However competent the meta-analysis, if the original review was partial, flawed or otherwise unsystematic, then the meta-analysis may provide a precise quantitative estimate that is simply wrong. The main requirements of systematic review are easier to state than to execute: a complete, unbiased collection of original, high-quality studies that examine the same therapeutic question. Guidance on avoiding the pitfalls of systematic reviews is readily available.<sup>2-4</sup>

## Interpreting the main findings

The usual way of displaying data from a meta-analysis is by a pictorial representation (sometimes known as a **blobbogram**), and a summary measure of effect size known as an **odds ratio**.

### 1. Blobbograms

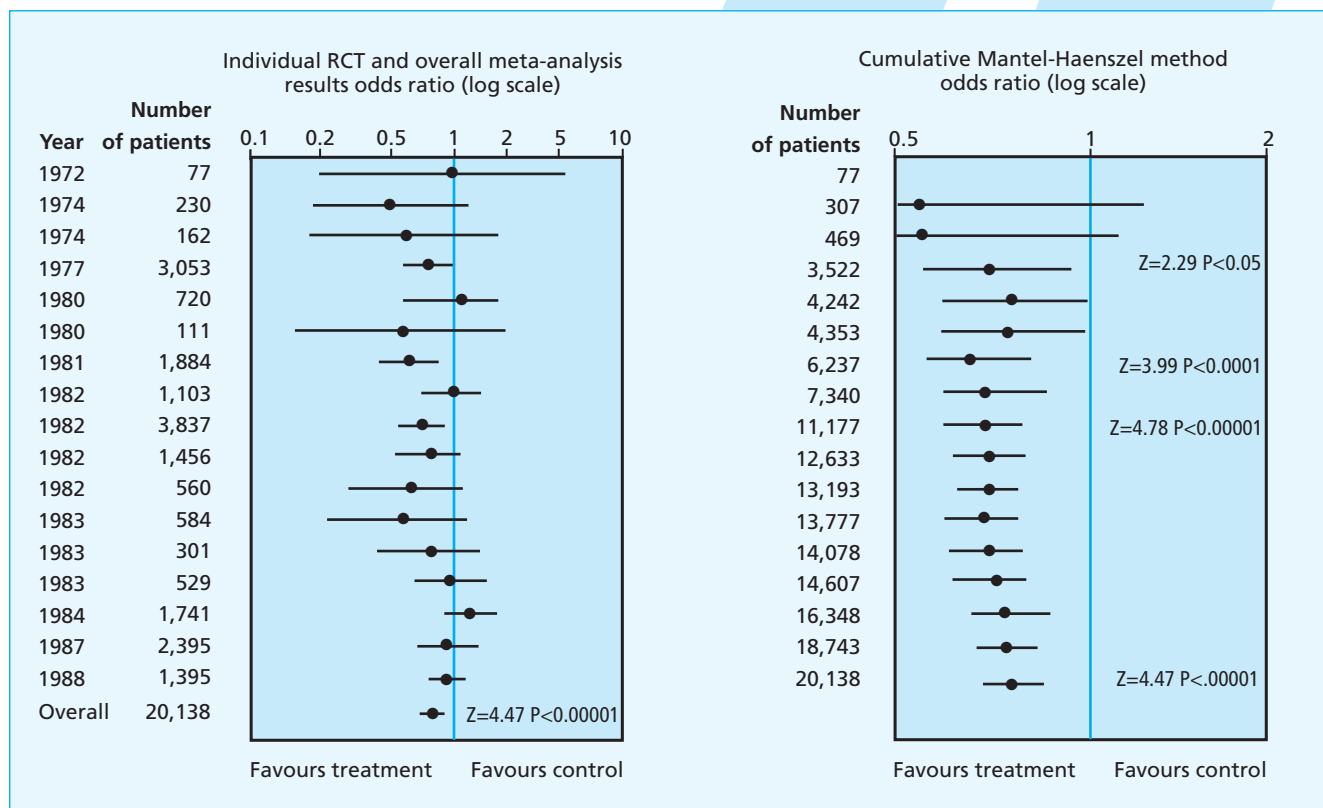
The inelegantly named 'blobbogram' displays the findings from each individual study as a blob or square (the measured effect), with a horizontal line (usually the 95% confidence interval) around the main finding. The size of the blob or square (sometimes just a small vertical line) may vary to reflect the amount of information in that individual study; the length of the horizontal line represents the uncertainty of the estimate of the treatment effect for that study. The aggregate effect size for certain subgroupings and the overall effect size are also usually displayed in the same figure. An example is shown in Figure 1.<sup>5</sup>

### 2. Odds ratios

The main measure of effect usually used in meta-analyses is the odds ratio (OR). This somewhat confusing measure is used because

**Figure 1. Presentation of the findings from a meta-analysis**

(Reproduced with permission from Antman *et al.*<sup>5</sup>)



# What is meta-analysis?

it offers some technical advantages when combining data from different studies.

For most practical purposes, the odds ratio can be interpreted as though it were a relative risk.<sup>6</sup> That is, an odds ratio of 2 implies that the defined outcome happens about twice as often in the intervention group as in the control group; an odds ratio of 0.5 implies around a 50% reduction in the defined event in the treated group compared with the controls.

Interpreting an odds ratio in this way (as an increase or decrease in risk) will always tend to overestimate the effect of treatment. However, the level of this overstatement is almost always quite small, especially when the event rate in the intervention and control groups is less than 30%.<sup>6</sup>

## Flaws in meta-analyses

As with all research techniques, there may be flaws in the conduct and interpretation of meta-analyses. Although meta-analyses of treatment effect collate data from randomised studies, they are themselves essentially observational studies of evidence.<sup>7</sup> Thus, they are subject to many potential biases that may undermine confidence in their findings.

### 1. Location and selection of studies

One widely quoted definition of meta-analysis is: **'a statistical analysis which combines or integrates the results of several independent clinical trials considered by the analyst to be "combinable"'**.<sup>8</sup> The key difficulty lies in deciding which sets of studies are 'combinable'. A meta-analysis is only as good as the set of studies on which it is based.

There are many ways in which the studies included may be incomplete or biased. Individual studies that report positive findings (ie, treatment benefit) are more likely to be published than those that find no effect of treatment. Further, they are more likely to be published in English-language journals, more likely to be published in journals that are indexed in bibliographic databases, more prone to multiple publication, and more likely to be cited by other papers thereafter.<sup>9</sup> Thus, failure to

find all relevant studies may produce misleading meta-analyses.

Once all relevant studies have been identified, decisions must be taken about which studies are sufficiently well conducted to be worth including. This process may again introduce bias, so good meta-analyses will use **explicit and objective criteria for inclusion or rejection** of studies on quality grounds.<sup>2</sup>

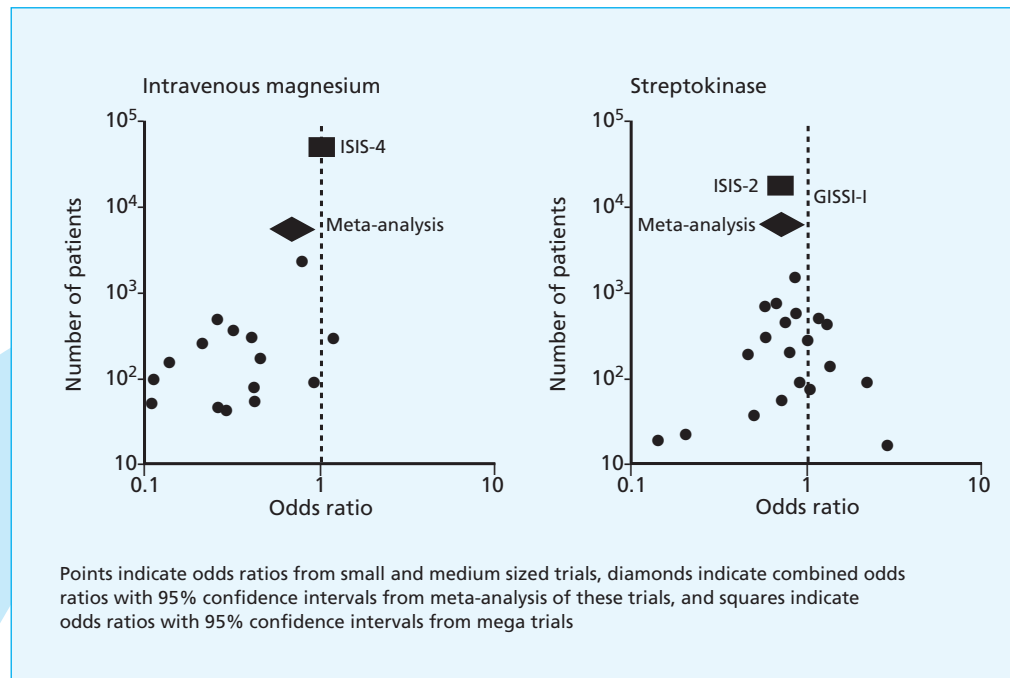
One simple way of assessing the likely presence of selection bias is to examine a **funnel plot**.<sup>10</sup> Funnel plots display the studies included in the meta-analysis in a plot of effect size against sample size. As smaller studies have more chance variability than larger studies, the expected picture is one of a symmetrical inverted funnel (see Figure 2, opposite).<sup>11</sup> If the plot is asymmetrical, this helps to identify that the meta-analysis may have missed some trials – usually smaller studies showing no effect.

Another approach to assessing the possible impact of publication bias is to work out how many studies of a given size with null or negative findings (ie, studies with no apparent effect of treatment, or those showing evidence of harm) would need to be included to counterbalance any positive effect found in the meta-analysis. This approach at least helps to make explicit the necessary size of any bias needed to invalidate the main findings. The interest then lies in whether it is likely that the calculated number of studies could have been missed. If the amount of missing data needed to invalidate the meta-analysis is large, and the initial literature search was thorough, then the main findings are less likely to be subject to selection bias.

### 2. Heterogeneity

A major concern about meta-analyses is the extent to which they mix studies different in kind (heterogeneity). Clearly, to get a precise answer to a specific question it makes sense to collate only studies exactly matching that question. Unfortunately, all studies differ on a number of different dimensions:

- **The patient groups** studied will often differ. In some instances this will be obvious, as in studies carried out on patients with different severities of disease. In other cases it



**Figure 2. Funnel plots used to identify possible missing studies**  
(Reproduced with permission from Egger *et al.*<sup>11</sup>)

will be less clear how the patient groups differ – for example, when studies are included from different geographical areas.

- **The interventions applied** may differ between individual studies. A meta-analysis might include a mixture of interventions rather than a single pure treatment. Meta-analyses have been carried out on single drugs (eg, magnesium or streptokinase), on classes of drugs (eg, cholesterol-lowering agents) or even on broad packages of care such as ‘stroke rehabilitation units’.

- **The primary outcome** examined may differ between studies, yet a meta-analysis seeks to aggregate data to some common end-point.

- All studies are carried out in **distinct settings**, which may differ markedly between the studies included (eg, meta-analyses frequently combine data from many different countries). Within these diverse settings there may be many other factors (eg, concomitant care) that contribute to the success or failure of the intervention under test.

This mixing of sometimes diverse studies varies between meta-analyses. Some are quite tightly drawn – for example, a meta-analysis examining the role of aspirin in preventing death after myocardial infarction. Others involve more of an assortment – for example, a meta-analysis of ‘nicotine replacement

therapy’ in smoking cessation included gum, patches and nasal sprays used on patients ranging from those well motivated to quit to those identified during opportunistic screening.<sup>12</sup> This mixing of diverse studies can make for a strange fruit salad: mixing apples and oranges may seem reasonable enough, but when sprouts, turnips or even an old sock are added, it can cast doubt on the meaning of any aggregate estimates.

Heterogeneity of studies is an unavoidable fact of meta-analysis. The question is not whether it is present but whether its extent seriously undermines the conclusions being drawn. For example, meta-analyses have examined the role of low-molecular-weight heparins (LMWHs) as postoperative thromboprophylactic agents,<sup>13,14</sup> and in the treatment of established deep venous thrombosis.<sup>15</sup> While these reviews largely demonstrate the usefulness of this class of drugs, some individual meta-analyses have been less conclusive.<sup>13</sup> One possibility is that not all LMWHs are the same,<sup>15,16</sup> and that the beneficial effects of the most efficacious compounds are being diluted by inappropriate heterogeneous aggregation. If this is the case, different LMWHs should be considered as distinct chemical entities and meta-analyses should be designed accordingly.

***Thus, consideration of heterogeneity has important implications for the design and interpretation of meta-analyses, even in apparently focused clinical areas.***

Graphical presentation of the findings from individual studies, perhaps grouped by important variables (eg, patient, intervention or setting characteristics), may at least help to make such heterogeneity explicit. Although statistical tests to detect heterogeneity do exist (and are often quoted in published work), in fact they lack power to detect anything but substantial differences. Simple 'eyeballing' of study diversity and the application of common (clinical) sense may be a better guide.

### **3. Loss of information on important outcomes**

In order to have some 'common currency' of outcome on which to combine data from different studies, meta-analyses may have to discard some data. Typically, meta-analyses are concerned with dichotomous outcomes (eg, alive/dead; cured/still ill; recurrence/non-recurrence of disease). In order to fit this framework, data from individual studies may have to be discarded, resulting in a potential loss of information. For example, meta-analyses of pain relief typically use 50% reduction in pain as the dichotomous outcome – thus, the detail of exactly how much pain was relieved is lost in the meta-analysis, patients being merely divided into 'successes' and 'failures'.

### **4. Inappropriate subgroup analyses**

Exploring subgroup findings is a common feature of meta-analyses, sometimes as a way of explaining a failure to find any overall effect. A subset of studies may be examined in isolation (perhaps those with high methodological quality) or, if individual patient data have been used in conducting the meta-analysis, subgroups of patients (perhaps the elderly, or those with severe disease) may be analysed separately. While this approach may offer insights that can be tested in further (prospective, randomised) studies, caution should be exercised in interpretation. Despite the underlying studies

being randomised, this randomisation and the subsequent likely balance between treated and control groups does not extend to subgroups defined after the fact. Thus, there is great potential for confounding and misleading findings.<sup>17</sup> Hunting around for subgroup effects should be seen for what it is – exploration and not explanation.

### **5. Inadequate sensitivity analyses**

Because of the many ways in which decisions taken about selection, inclusion and aggregation of data may affect the main findings, it is usual for meta-analysts to carry out some **sensitivity analysis**. This explores the ways in which the main findings are changed by varying the approach to aggregation. A good sensitivity analysis will explore, among other things, the effect of excluding various categories of studies – for example, unpublished studies or those of poor quality. It may also examine how consistent the results are across various subgroups (perhaps defined by patient group, type of intervention or setting). In meta-analyses without sensitivity analyses the reader has to make guesses about the likely impact of these important factors on the key findings.

### **6. Conflict with new experimental data**

Meta-analyses seek new knowledge from existing data. One test of the validity of this new knowledge is to compare the results from meta-analyses with subsequent findings from large-scale, well-conducted, randomised control trials (so-called '**mega trials**'). The results of such comparisons have, so far, been mixed – good agreement in the majority of cases but some discrepancies in others.<sup>18,19</sup> For example, one such exercise led to publication of a paper subtitled 'Lessons from an "effective, safe, simple intervention" that wasn't' (use of intravenous magnesium after heart attacks).<sup>11</sup>

With the benefit of hindsight, the flaws in meta-analyses that have been subsequently contradicted by data from mega trials can often be uncovered. Such post mortems have led to a number of methodological improvements (such as funnel plots) and a greater understanding of the pitfalls

outlined above. Nonetheless, they underline the need for caution in interpretation because, as one reviewer of meta-analyses commented: '**we never know as much as we think we know**'.<sup>19</sup>

## Conclusion

Meta-analyses offer a more systematic and quantitative approach to reviewing important therapeutic questions. Nonetheless, pitfalls abound in the execution of meta-analyses and they are fundamentally limited by the quality of the underlying studies (the so-called GIGO principle of '**garbage in,**

**garbage out**'). For healthcare managers and clinicians, careful reviewing of published meta-analyses and a balanced assessment of their deficiencies is likely to become an increasingly important way of resolving therapeutic uncertainty.

## Further information

The authors are indebted to the excellent series on meta-analysis published in the *British Medical Journal*.<sup>7,9,17,21-23</sup> The interested reader will find that these papers offer much more detail than can be contained in this short briefing document.

## References

1. Davies HTO, Crombie IK. *What is a Systematic Review?* Newmarket: Hayward Medical Communications, 1998.
2. Cook DJ, Sackett DL, Spitzer WO. Methodologic guidelines for systematic reviews of randomized control trials in health care from the Potsdam consultation on meta-analysis. *J Clin Epidemiol* 1995; **48**: 167-171.
3. Milne R, Chambers L. Assessing the scientific quality of review articles. *J Epidemiol Community Health* 1993; **47**: 169-170.
4. Oxman AD, Cook DC, Guyatt GH. Users' guides to the medical literature: VI. How to use an overview. *JAMA* 1994; **272**: 1367-1371.
5. Antman EM, Lau J, Kupelnick B, Chalmers TC. A comparison of results of meta-analysis of randomized control trials and recommendations of clinical experts. *JAMA* 1992; **268**: 240-248.
6. Davies HTO, Crombie IK, Tavakoli M. When can odds ratios mislead? *BMJ* 1998; **316**: 989-991.
7. Egger M, Davey Smith G, Phillips AN. Meta-analysis: principles and procedures. *BMJ* 1997; **315**: 1533-1537.
8. Huque MF. Experiences with meta-analysis in NDA submissions. *Proceedings of the Biopharmaceutical Section of the American Statistical Association* 1988; **2**: 28-33.
9. Egger M, Davey Smith G. Meta-analysis: Bias in location and selection of studies. *BMJ* 1998; **316**: 61-66.
10. Egger M, Davey Smith G, Schneider M, Minder C. Bias in meta-analysis detected by a simple graphical test. *BMJ* 1997; **315**: 629-634.
11. Egger M, Davey-Smith G. Misleading meta-analysis: Lessons from "an effective, safe, simple" intervention that wasn't. *BMJ* 1995; **310**: 752-754.
12. Silagy C, Mant D, Fowler G, Lodge M. Meta-analysis on efficacy of nicotine replacement therapies in smoking cessation. *Lancet* 1994; **343**: 139-142.
13. Nurmohamed MT, Rosendaal FR, Buller HR *et al*. Low-molecular-weight heparin versus standard heparin in general and orthopaedic surgery: a meta-analysis. *Lancet* 1992; **340**: 152-156.
14. Leizorovicz A, Haugh MC, Chapuis F-R, Samama MM, Boissel J-P. Low-molecular-weight heparin in prevention of perioperative thrombosis. *BMJ* 1992; **305**: 913-920.
15. Lensing AWA, Prins MH, Davidson BL, Hirsh J. Treatment of deep venous thrombosis with low-molecular-weight heparins. *Arch Intern Med* 1995; **155**: 601-607.
16. Samama MM, Bara L, Gouin-Thibault I. New data on the pharmacology of heparin and low-molecular-weight heparins. *Drugs* 1996; **52**(Suppl 7): 8-15.
17. Egger M, Davey Smith G, Phillips AN. Meta-analysis: beyond the grand mean? *BMJ* 1997; **315**: 1610-1614.
18. LeLorier J, Gregoire G, Benhaddad A, Lapierre J, Derderian F. Discrepancies between meta-analyses and subsequent large randomized controlled trials. *N Engl J Med* 1997; **337**: 536-542.
19. Villar J, Carroli G, Belizan JM. Predictive ability of meta-analyses of randomised controlled trials. *Lancet* 1995; **345**: 772-776.
20. Bailar III JC. The promise and problems of meta-analysis. *N Engl J Med* 1997; **337**: 559-561.
21. Egger M, Davey Smith G. Meta-analysis: potentials and promise. *BMJ* 1997; **315**: 1371-1374.
22. Egger M, Schneider M, Davey Smith G. Spurious precision? Meta-analysis of observational studies. *BMJ* 1998; **316**: 140-144.
23. Davey Smith G, Egger M. Meta-analysis: unresolved issues and future developments. *BMJ* 1998; **316**: 221-225.

# What is meta-analysis?

## Abbreviated prescribing information: Clexane®

**Presentation:** Clear, colourless to pale yellow solution of 100mg enoxaparin sodium per 1mL (anti-factor Xa activity of 10,000IU/mL with reference to the WHO First International LMW Heparin Reference Standard). **Cartridges:** single dose prefilled syringes fitted into a cartridge containing either: 20mg enoxaparin sodium in 0.2mL (2,000IU) or 40mg enoxaparin sodium in 0.4mL (4,000IU). The cartridge is to be fitted into the Clexane® Auto-Injector. 100 mg/mL prefilled syringes: single dose prefilled syringes containing either: 20mg enoxaparin in 0.2mL (2,000IU) or 40mg enoxaparin in 0.4mL (4,000IU). **Indications:** Prophylaxis of thromboembolic disorders of venous origin, in particular those associated with orthopaedic or general surgery and in medical patients bedridden due to acute illness. **Dosage & Administration:** Patients with low to moderate risk of thromboembolism, eg general surgery, recommended dose of Clexane® is 20mg (2,000IU) once daily subcutaneously, the initial dose being given approximately 2 hours preoperatively. Patients with high risk of venous thromboembolism, eg orthopaedic surgery, the recommended dose is 40mg (4,000IU) once daily subcutaneously, the initial dose being given approximately 12 hours preoperatively. Clexane® should be continued for 7 to 10 days or until risk of thromboembolism has diminished. Medical patients bedridden due to acute illness, the recommended dose is 40mg (4,000IU) once daily for a minimum of 6 days until return to full ambulation, for a maximum of 14 days. **Elderly:** No dosage adjustment necessary. **Children:** Not recommended. **Contraindications:** Acute bacterial endocarditis, major bleeding disorders, thrombocytopenia in patients with positive *in-vitro* aggregation test in presence of Clexane®, active gastric/duodenal ulcer, hypersensitivity to enoxaparin, stroke (unless due to systemic emboli) and other patients with increased risk of haemorrhage. **Warning:** Clexane® must not be administered by the intramuscular route. **Precautions:** Clexane® should be used with care in hepatic insufficiency, history of thrombocytopenia, and conditions with increased bleeding potential. Different low molecular weight heparins may not be equivalent; alternative products should not be substituted during therapy. Heparins can suppress adrenal secretion of aldosterone leading to hyperkalaemia. **Pregnancy:** Clexane® should not be used during pregnancy unless no safer alternative is found. **Lactation:** Advise avoidance of breast-feeding. **Interactions:** Care in patients receiving agents affecting haemostasis, eg oral anticoagulants, thrombolytics, systemic glucocorticoids, NSAIDs, aspirin. **Adverse Reactions:** Bleeding in the presence of associated risk factors, rarely retroperitoneal and intracranial bleeding. Rarely thrombocytopenia, liver abnormalities (eg transaminases and alkaline phosphatase changes), allergic reactions. At site of injection: pain, haematoma, irritation, rarely hard inflammatory nodules and skin necrosis. Osteoporosis has not been reported with Clexane® but the risk cannot be excluded. Heparins can cause increase in plasma potassium, and rarely, clinically significant hyperkalaemia. Rare reports of intra-spinal haematoma when using spinal/epidural anaesthesia and post-operative indwelling catheter. **Pharmaceutical Precautions:** Do not mix with other injections or infusions. Clexane® cartridges: store at or below 25°C. Do not freeze cartridges. Prefilled syringes: do not store above 25°C. Do not refrigerate or freeze.

**Legal Category:** POM; Clexane® cartridges PL 0012/0336, Clexane® 100 mg/mL prefilled syringes PL 0012/0196. **Basic NHS cost for 10 cartridges:** 20mg - £47.90, 40mg - £60.79. **Basic NHS cost for 10 prefilled syringes:** 20mg - £33.89, 40mg - £45.16.

Full Prescribing Information and further information is available on request from Aventis Pharma, 50 Kings Hill Avenue, West Malling, Kent. ME19 4AH. **Date of preparation:** June 2000. ®denotes a registered trademark.

This publication, along with the others in the series, is available on the internet at [www.evidence-based-medicine.co.uk](http://www.evidence-based-medicine.co.uk)

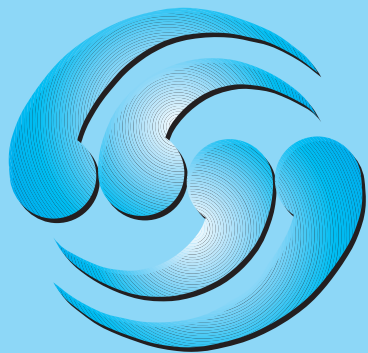


Sponsored by an educational grant from  
**Aventis Pharma**

### Any enquiries please contact:

Team Assistant to the Health  
Economics Unit  
Aventis House  
Kings Hill  
West Malling  
Kent  
ME19 4AH  
Tel: 01732 584 254  
Fax: 01732 584 029

Published by Hayward Medical  
Communications, a division of  
Hayward Group plc.  
Copyright © 2001 Hayward  
Group plc.  
All rights reserved.



# What is... ?

Sponsored by an educational grant from Aventis Pharma

## 'What is...?' bulletins

**faxback form** fax no. 01732 584029

If you would like to receive more information about the What is... ? series simply print out this form, fill in your details and fax it to: Team Assistant to the Health Economics Unit, Aventis Pharma.

Name: \_\_\_\_\_

Position: \_\_\_\_\_

Address: \_\_\_\_\_

\_\_\_\_\_

\_\_\_\_\_

Postcode: \_\_\_\_\_ (For mailing purposes a postcode must be supplied)

Tel: \_\_\_\_\_ Fax: \_\_\_\_\_

Email: \_\_\_\_\_

*[www.evidence-based-medicine.co.uk](http://www.evidence-based-medicine.co.uk)*